

# Assessment

*Comprehensive Compliance Monitoring, Reporting & Best Practices!*



## Product Description

Raz-Lee Security's Assessment module, part of the iSecurity suite, enables you to evaluate your system's security vulnerabilities in minutes and rate its level of compliance!

Assessment checks your ports, sign-on attributes, user privileges, passwords, terminals and much more. Results are provided instantly, with a score of your current security status using your present security policies, compared to your system's security status if iSecurity were in place.

These results include colorful diagrams, a detailed written analysis, numerical scores and clear, easy-to-follow security recommendations.

Assessment is part of iSecurity's Compliance solution for SOX, HIPAA, etc. regulatory issues!

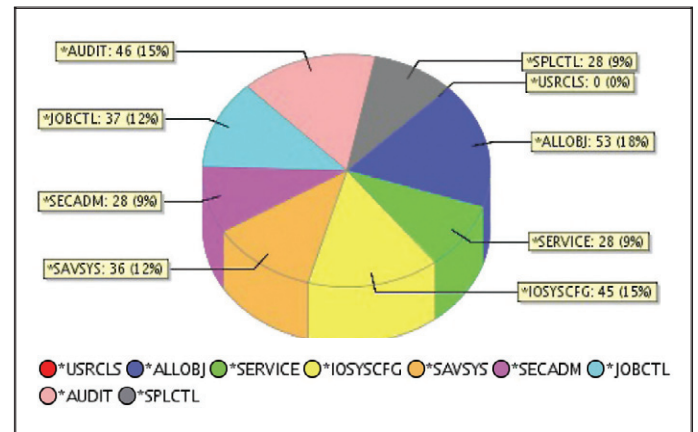
## Do you know how effective YOUR System i security is?

Unfortunately, most companies don't. They tend to hope the "hot potato" won't really become an issue and as such tend to downplay the need for a comprehensive security solution for the System i. But it's not that simple, Every system MUST be checked for its level of compliance to security standards on a regular basis.

## The Assessment Solution

Here's where Raz-Lee Security enters the picture. Based upon years of experience working with and developing powerful software tools for the System i, our team of security professionals has created an interactive assessment report that allows you to test your System i's security vulnerability in mere minutes!

This stringent security test assesses your security policies and shows- in a flash- exactly what your system's strengths and weaknesses are.



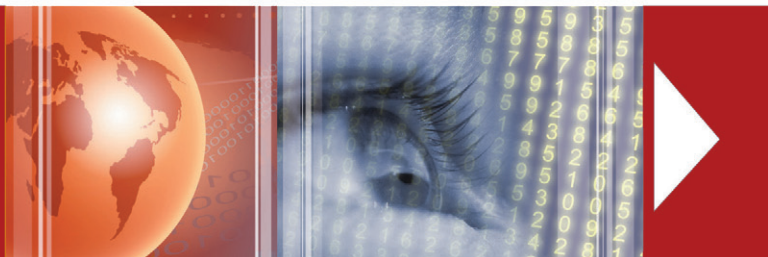
Colorful graphic displays provide easy reference and understanding

## The Assessment Report shows you:

- > How SOX/HIPAA/etc. compliant your system is
- > Your network's protection level via exit points
- > If sign-on attributes are implemented properly and in accordance with corporate requirements
- > To what extent system and user activities are being monitored efficiently and consistently
- > Summary information regarding power users, user classes, special authorities, enabled users, command line authority, default passwords and more
- > Global settings affecting unattended terminals
- > All relevant definitions relating to object access authorities
- > How much more effective your system's security would be by using iSecurity!

# Assessment

*Comprehensive Compliance Monitoring, Reporting & Best Practices!*



## The Assessment Guarantee

Assessment is certified by Raz-Lee Security for validity, precision and accurate results, reflecting the definition and design expertise of System i security experts.

## Benefits

- > Easy to use; simply download, execute and obtain results in minutes
- > Intuitive and easy to understand
- > Raz-Lee Security certified for accuracy
- > Comprehensive check of all system security aspects
- > Establish baselines for testing your system's level of compliance
- > Industry best-practice security system value recommendations
- > Pinpoints iSecurity modules required for maximum security/compliance

Section	Score	Explanation
3.1 Sign-on Attributes	40	A few settings are in accordance with industry standards but most require immediate modification. <b>Security User Sign On functionality should be implemented.</b>
3.2 Use of Adopted Authority	0	Only the actual usage of adopted programs can be analyzed. <b>Security Firewall can locate all programs using Adopted Authority and also allows for approving/disapproving Adopted Authority for such programs.</b>
3.3 Unattended terminals	0	Computer settings are faulty. <b>Avoid a possible security threat to the network by implementing iSecurity Screen.</b>
3.4 Miscellaneous Sign-on	58	Some miscellaneous sign-on values are in accordance with industry standards. However, the computer's scores are borderline and should be reviewed.
3.5 Password Control	26	Computer settings are faulty and open to password-related security threats. <b>iSecurity Password should be implemented.</b>
3.6 Activation of Network Protection	95	Most of the computer's exit points are protected; minor revisions will enable the computer to be fully protected. <b>iSecurity Firewall is the only product on the market which controls and manages all security-related System i exit points and is required in a PC-emulated environment.</b>
3.7 Auditing System and User Activities	84	Most of the computer's auditing policies are in place and require only minimal revisions. <b>iSecurity Audit should be implemented.</b>

Executive Summary scores by security exposure, including explanation and suggestions for improvement

Importance	User privilege	Description	Number	Current Score
	*ALLOBJ	All object authority is granted for accessing any system resource	53	☆☆☆☆☆
	*AUDIT	Allows the user to perform auditing functions	46	☆☆☆☆☆
	*IOSYSCFG	Allows change of system configuration	45	☆☆☆☆☆
	*JOBCTL	Allows manipulation of job and output	37	☆☆☆☆☆
	*SAVSYS	Used for saving and restoring the system and data without having explicit authority to objects, queues, and subsystems	36	☆☆☆☆☆
	*SECADM	Allows administration of user profiles	28	☆☆☆☆☆

Structured tables provide easy-to-understand system value or parameter descriptions, with current setting and score

## Features

- > Performs a thorough system vulnerability check
- > Hyperlinks help you navigate through different sections of the report
- > Provides colorful, graphically-displayed results
- > Provides a detailed, written analysis of your security policies
- > Numerical scores help explain results
- > Covers user class, user privileges, system settings, exit points, signon attributes, password control, network protection, unattended terminals and much more!

## U.S. Office & Corporate HQ

12 Englewood Ave • Nanuet, New York 10954  
 Toll Free Tel.: 1-888-RAZLEE-4  
 Fax: 1-419-781-5851

## Research & Development

71 Hanadiv St. • Hertzliya, Israel 46485  
 Tel.: +972-9-9588860  
 Fax: +972-9-9588861

E-mail: [marketing@razlee.com](mailto:marketing@razlee.com) ● ● ●

[www.razlee.com](http://www.razlee.com)